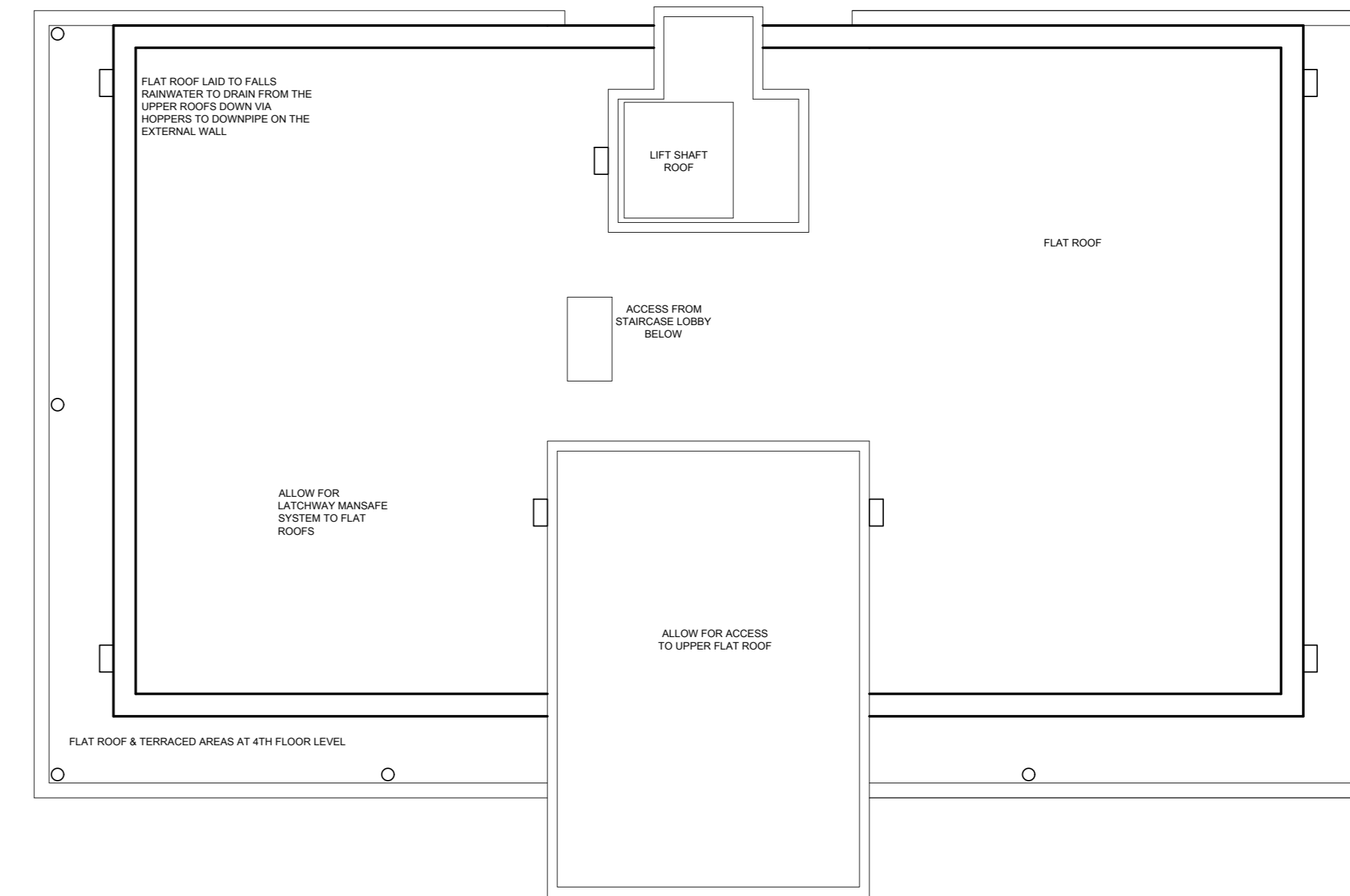
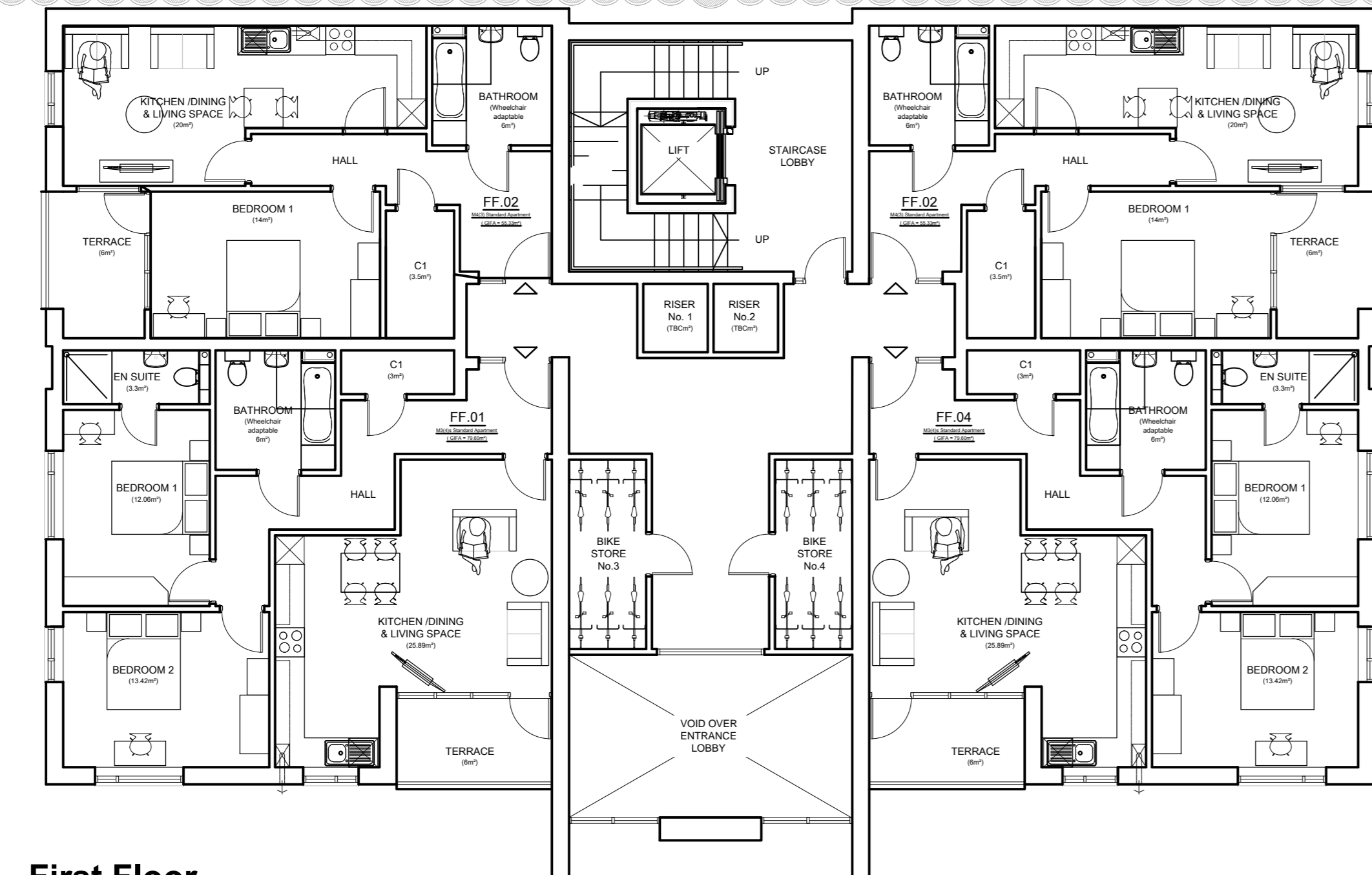


Second Floor
Entrance from Chairborough Way - Blocks S07 & S08
Entrance from Longland Way - Block N04

GIFA = 416.25sqm (4480.47sqft) incl circulation

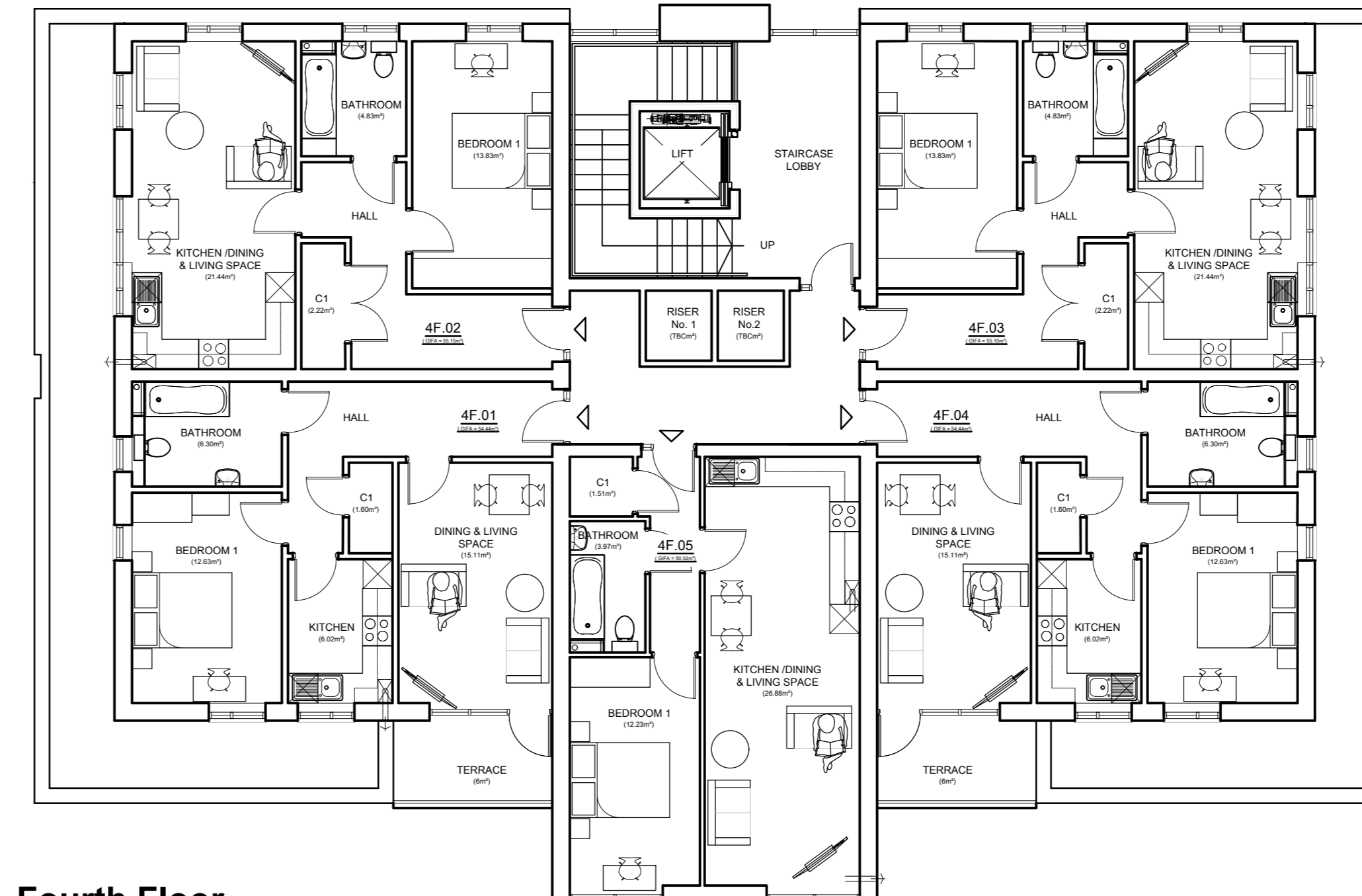


Roof Plan



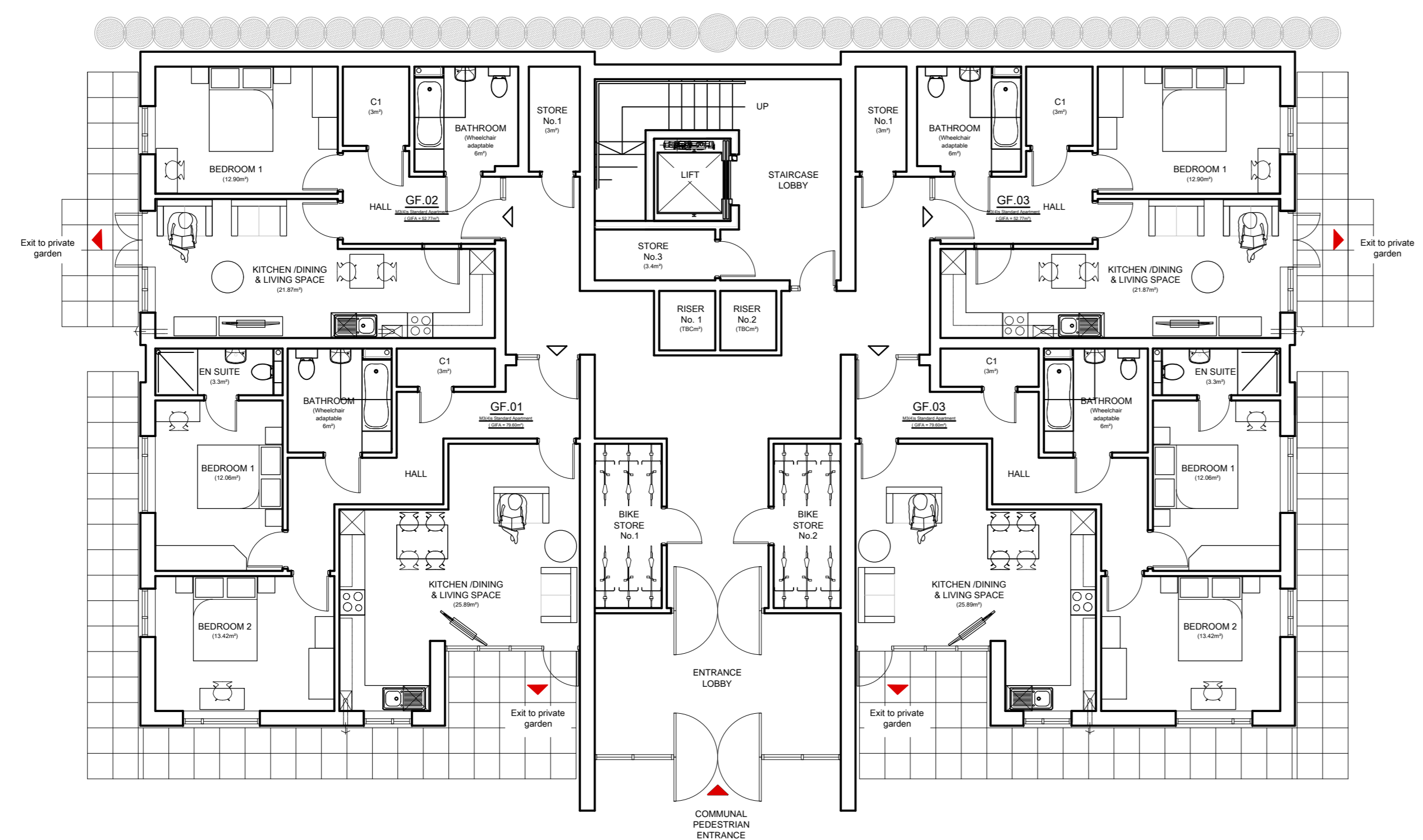
First Floor

GIFA = 364.71sqm (3925.70sqft) incl circulation



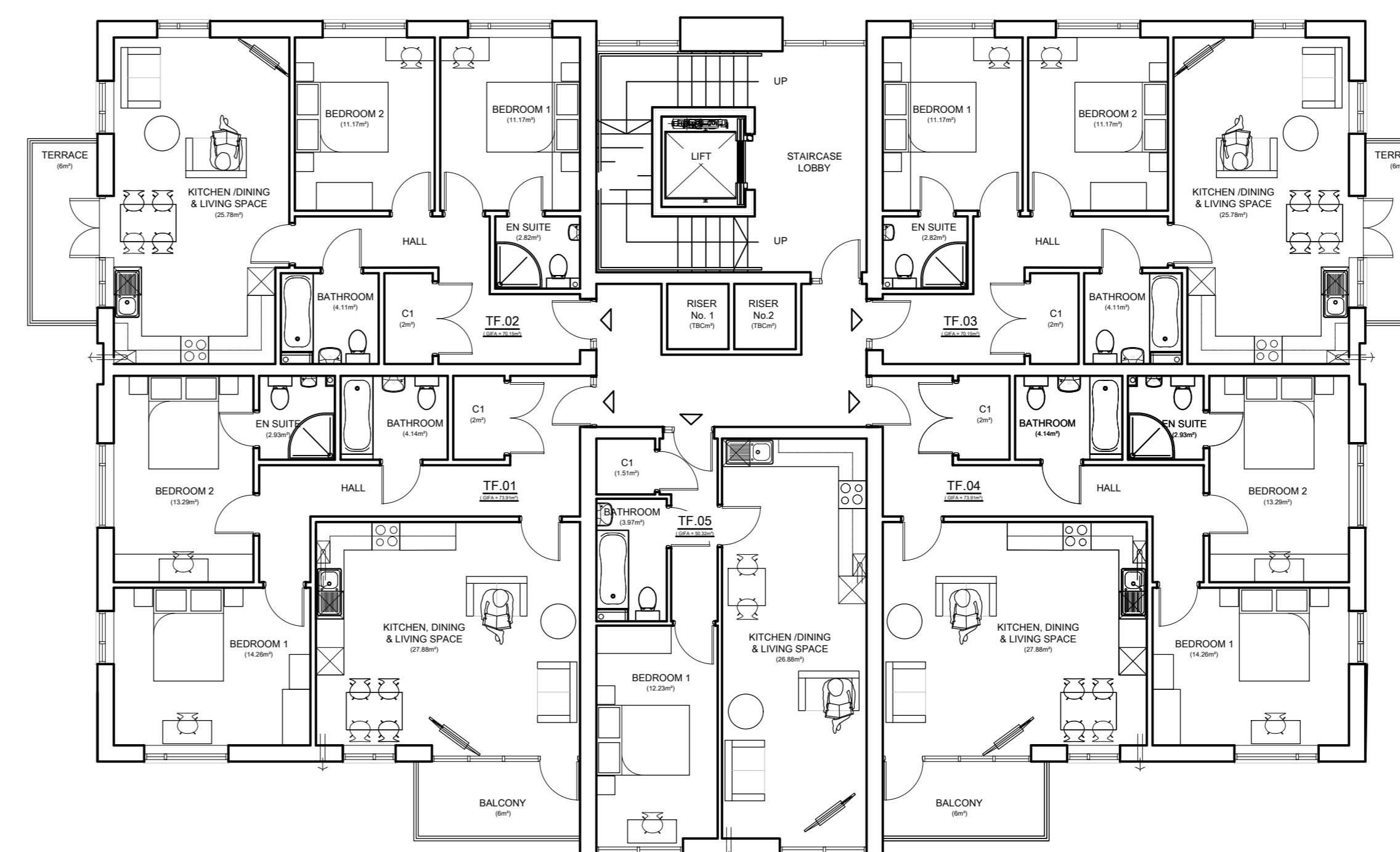
Fourth Floor

GIFA = 330.85sqm (3561.24sqft) incl circulation



Ground Floor
Main Entrance from McLellan Place - Blocks S07 & S08
Main Entrance from Central P.O.S - Block N04

GIFA = 394.62sqm (4247.65sqft) incl circulation



Third Floor

GIFA = 416.25sqm (4480.47sqft) incl circulation

Rev	Date	Description
H	25/10/19	FLOOR AREAS ADJUSTED
G	24/10/19	PLAN UPDATED FOR NEW APPLICATION
F	11/10/19	PLANS UPDATED IN LINE WITH ELEVATIONS BLOCKS N05 & N06 REMOVED
E	27/09/19	PLANS UPDATED & RE-NUMBERED FOR NEW PLANNING SUBMISSION
D	08/05/19	PATH DOORS SHOWN TO FLATS LB.01 & 04
C	01/02/19	PLANS UPDATED, HIGH LEVEL WINDOW (2) OMITTED
B	23/11/18	MINOR AMENDMENTS BEFORE PLANNING SUBMISSION
A	05/11/18	ISSUE FOR PLANNING APPROVAL



Arcus Consulting LLP
Wakefield 0192 466 9000
Liverpool 0151 708 1080
www.arcus-uk.com

Manchester 0161 905 2222
Newcastle 0191 281 4000
info@arcus-uk.com

Client
RED KITE COMMUNITY HOUSING

Project
RESIDENTIAL DEVELOPMENT
CASTLEFIELD, HIGH WYCOMBE

Title
Proposed Floor Plans
Blocks N04, S07 & S08

Date	Drawn	Stage
11/02/19	JA	3
11/02/19	JA	3
31/05/19	JA	G
	SB	

This drawing is the copyright of Arcus. Contractors must check all dimensions on site. Do not scale the drawings. Only figured dimensions are to be worked to.