



SOUTH EAST ELEVATION



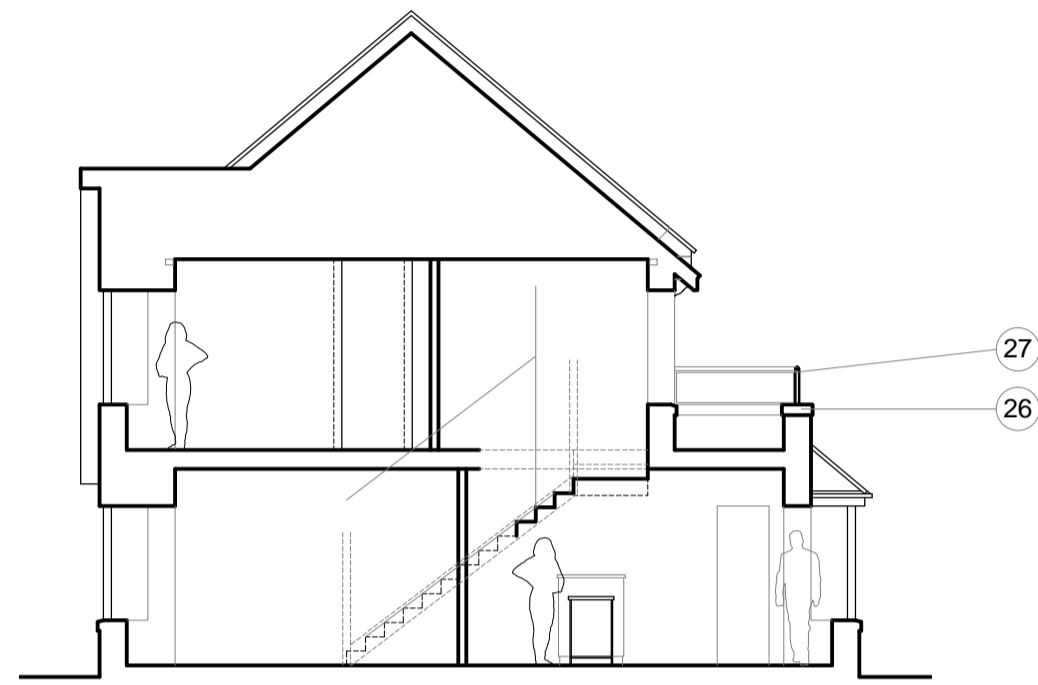
SOUTH WEST ELEVATION



NORTH WEST ELEVATION

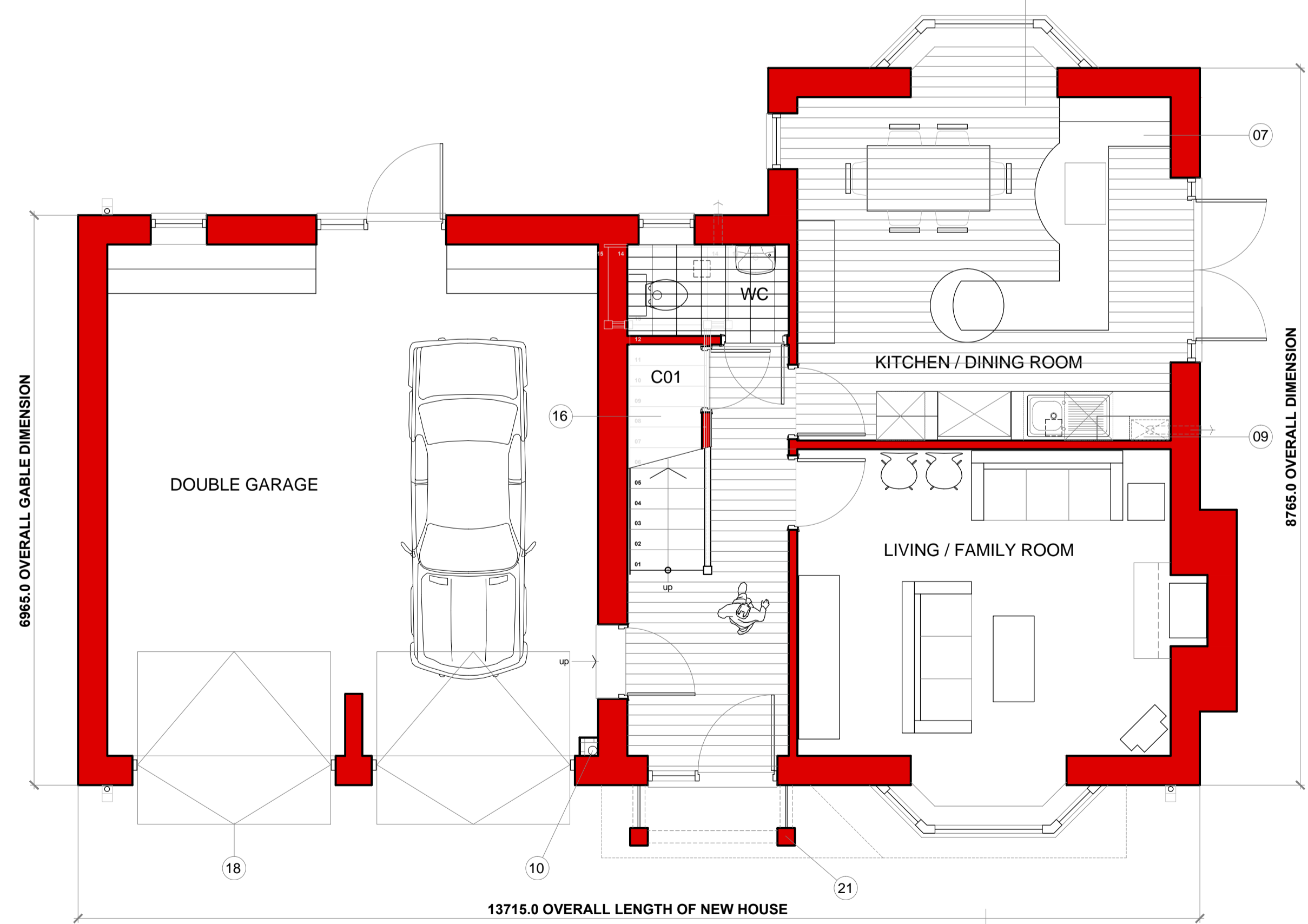


NORTH EAST ELEVATION

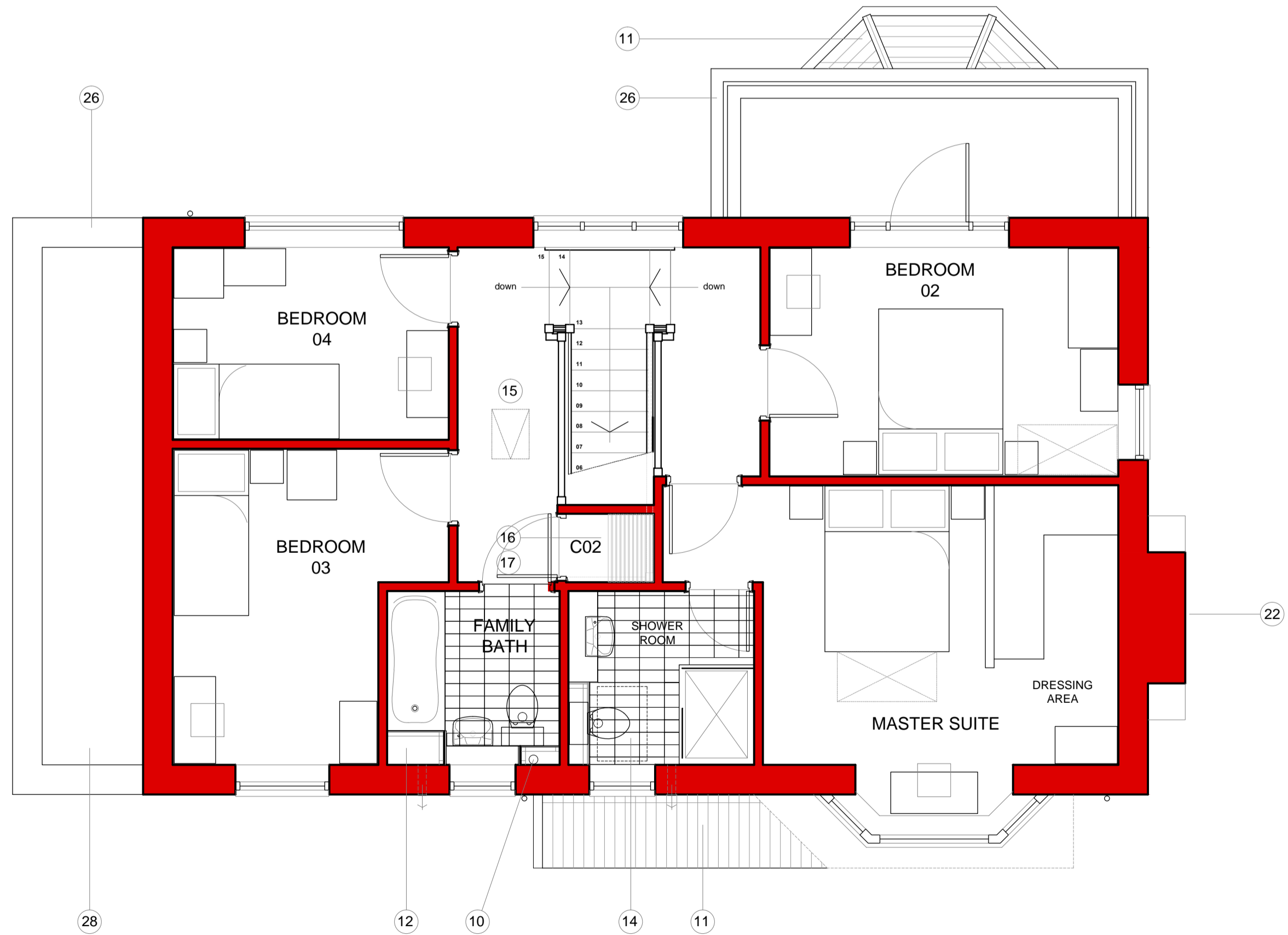


SECTION AA THROUGH KITCHEN

- | | |
|--|---|
| 01. LEVEL ACCESS TO EXTERNAL DOORS GENERALLY | 17. SLATTED SOFTWOOD SHELVES TO CUPBOARD C02 |
| 02. 215 DEEP CAST STONE WINDOW HEAD DETAIL | 18. UP AND OVER ALUMINIUM GARAGE DOORS WITH GLAZED LIGHTS |
| 03. OBSCURED DOUBLE GLAZED WINDOW (RAL 7016 COLOURED EXTERNALLY, WHITE INTERNALLY) | 19. NEW TREES AND LANDSCAPING DESIGN LA APPROVAL |
| 04. BLACK COMPOSITE FRONT ENTRANCE DOOR TO PASS 24 SECURITY CERTIFICATION | 20. NEW RED CLASS B ENGINEERING BRICKWORK PLINTH UP TO GROUND FLOOR LEVEL |
| 05. DOUBLE GLAZED WINDOWS AND DOORS (RAL 7016 COLOURED EXTERNALLY, WHITE INTERNALLY) | 21. EXPOSED OAK PORCH DETAILING |
| 06. 140 DEEP STOOLED CAST STONE CILL DETAIL | 22. RANDOM COURSED STONE TO EXTERNAL CHIMNEY BREAST |
| 07. KITCHEN FITTINGS MINIMUM LENGTH 7330 WITH MINIMUM 2.4m³ STORAGE VOLUME | 23. MARLEY ACME PLAIN TILE HANGING DETAIL TO BAY WINDOW CONSTRUCTION |
| 08. MAINS INCOMING DB BOARD LOCATED IN ENTRANCE HALL (NOTE ONLY) | 24. FACING BRICKWORK TO LA APPROVAL |
| 09. GAS WALL MOUNTED BOILER LOCATED WITHIN KITCHEN WALL CUPBOARD | 25. RAL 7016 DARK GREY FASCIA AND SOFFIT DETAIL |
| 10. SVP LOCATED IN INSULATED BOXING | 26. 140 DEEP CAST STONE COPING TO SINGLE STOREY PARAPET WALLS |
| 11. MARLEY ACME SMOOTH BRINDLE PLAIN TILE ROOF COVERING | 27. BRUSH STAINLESS STEEL HANDRAIL WITH GLASS INFILL PANELS |
| 12. FULL HEIGHT TILED BOXING FOR OVER-BATH SHOWER | 28. SINGLE PLY INSULATED BONDED FLAT ROOF CONSTRUCTION TO FALLS |
| 13. BLACK RAINWATER GOODS | 29. 215 EXTERNAL GARDEN WALL TO DETAIL TO MATCH MAIN BRICK BUILDING |
| 14. VELUX CONSERVATION STYLE ROOF-LIGHT TO ENSUITE | 30. CAST STONE KNEELER, CORBEL DETAIL TO EAVES |
| 15. INSULATED LOFT HATCH TO ROOF SPACE | 31. CAST STONE WATER TABLE DETAILING |
| 16. STORAGE CUPBOARD C01 & C02 WITH MINIMUM AREA MINIMUM 3.0m² | 32. LEAD FLASHING CODE 3 GENERALLY |



GROUND FLOOR PLAN
FA = 51.83m² (Excluding Entrance Lobby & Garages) - 91.56m² (Including garages)



FIRST FLOOR PLAN
FA = 72.50m² (Including Bay Window)

Rev	Date	Description
A	05/10/17	BALCONY ADDED TO BED 2, C02 MOVED & BED 3/4 ADJUSTED



Arcus Consulting LLP
Wakefield 0192 466 8000 Manchester 0161 955 3222 Cambridge 01223 325 7705
Liverpool 0151 708 1080 Newcastle 0191 272 5781 info@arcus.co.uk
www.arcus.co.uk

Client
RED KITE COMMUNITY HOUSING

Project
RESIDENTIAL DEVELOPMENT
SEYMOUR COURT ROAD, MARLOW, SL7 3AX

Title
Sketch Design
PROPOSED HOUSE PLANS & ELEVATIONS

Scale	Date	Stage
1:50 / 1:100 @ A1	12/09/17	2
Job No	Drawing No	Rev
4550	SK 20.001	A
Drawn	Approved	
NG	BC	

This drawing is the copyright of Arcus. Contractors must check all dimensions on site. Do not scale the drawings. Only figured dimensions are to be worked to.

seymour court road - marlow